

English

# EXPERIENCE NEO



FRANKIA MOTORHOMES  
2025 3.5 T ON A  
MERCEDES-BENZ PLATFORM

**FRANKIA**

# SMALL BUT SIGNIFICANT ENOUGH

## WEIGHT AND SIZE SPECIFICATIONS

As a manufacturer, we specify a total mass of each vehicle, for which the vehicle is authorised for road use. This total mass must not be exceeded when driving. Our information on vehicle weights is therefore of great importance when selecting your motorhome and configuring optional equipment offered by the manufacturer. The following information gives you an overview of the legal framework for our weight specifications. You should read this information carefully before selecting and configuring your motorhome. If in doubt, please contact your dealer.

### 1. Technically permissible maximum laden mass

The technically permissible maximum laden mass is the total mass specified by the manufacturer, which your motorhome must not exceed when driving. You will find information on the technically permissible maximum laden mass of each vehicle in the Technical Data.

Please note that exceeding the technically permissible maximum laden mass is a misdemeanour in Germany and many other European countries and can be punished with a fine. As a driver, you are responsible for ensuring that the technically permissible maximum laden mass is not exceeded. You should therefore weigh your motorhome before every journey.

### 2. Mass in running order

The mass in running order for the vehicle version of your motorhome is entered in section 13 of the Certificate of Conformity (CoC) and indicates the unladen weight of the vehicle with standard equipment according to the manufacturer's specifications, including

- the mass of the body, the cab, the tyre repair kit and the tools,
- the fresh water tank filled to 100 % in driving mode (drive load according to the Technical Data),
- one aluminium gas cylinder filled to 100 %, with a weight of 16 kg,
- the fuel tank filled to 90 % including fuel,
- the AdBlue-Tank filled to 100 %,
- the mass of the driver, which (regardless of the actual weight) is rated at 75 kg.

Information on the mass in running order of the basic variant of the vehicle can be found in the Technical Data. Please note that the mass in running order indicates calculated values from the type approval procedure, which may deviate by up to +/- 5 % due to production. The occurrence of such production-related deviations of up to +/- 5 % is permitted by law, but may have an impact on the pay-mass of your motorhome.

### Example:

Mass in running order according to Technical Data in kg	<b>2,950.0</b>
Production-related deviation of +/- 5 % in kg	<b>147.5</b>
Legally permissible deviation in mass in running order in kg	<b>2,802.5 – 3,097.5</b>

Information on the legally permissible deviations in the mass in running order can also be found in the Technical Data.

### 3. Mass of passengers

The mass of the passengers is based on the number of belt seats specified by the manufacturer rated at 75 kg per belt seat regardless of the actual weight of the passengers. The driver is not included in the calculation. The mass of the driver is already included in the mass in running order at 75 kg. If the manufacturer has provided four belt seats for your motorhome, the mass of the passengers is 225 kg (3×75 kg).

You can find information about the number of belt seats specified by the manufacturer in the technical data.

### 4. Actual mass | Packages and optional equipment

Actual mass of the vehicle means the mass in running order plus the mass of the optional equipment fitted to an individual vehicle by the manufacturer and is entered in section 13.2 of the Certificate of Conformity (CoC). This specification does not include optional equipment or other accessories that are fitted to the vehicle by a dealer, other third party or you personally after the vehicle has left the factory.

Please note that the actual mass of the vehicle is also a calculated value. Therefore, this value may also deviate from the actual value determined for your individual motorhome due to legally permissible production-related deviations in the mass in running order as part of the actual mass.

Please also refer to the technical data for weight information on the optional equipment offered by the manufacturer.

### 5. Pay-mass and minimum pay-mass

The pay-mass is the free mass of luggage and other accessories that your vehicle can transport without exceeding the technically permissible maximum laden mass. It is calculated by subtracting the mass in running order, the mass of the passengers and the mass of the optional equipment fitted by the manufacturer from the technically permissible maximum laden mass.

**Example:**

Technically permissible maximum laden mass	<b>3,500 kg</b>
Mass in running order	<b>- 2,950 kg</b>
Mass of passengers	<b>- 225 kg</b> (3*75 kg)
Mass of optional equipment	<b>- 65 kg</b>
Pay-mass	<b>= 260 kg</b>

As you can see from the example, the fitting of optional equipment leads to a reduction in the pay-mass. The maximum mass available for optional equipment can be found in the Technical Data.

The law stipulates a minimum pay-mass for motorhomes, which the vehicle must comply with. This minimum pay-mass may not be undercut during either configuration or production. According to the law, the minimum pay-mass is calculated as follows:

**Minimum pay-mass in kg  $\geq 10 \times (n + L)$** 

Where 'n' is the maximum number of passengers plus the driver and 'L' is the overall length of the vehicle in metres.

**Example:**

For a motorhome with four belt seats (including driver) and a length of seven metres, this results in a minimum pay-mass of 110 kg ( $10 \times [4+7]$ ). Please keep in mind that legally permissible production-related deviations in the mass in running order could increase or reduce the pay-mass of your motorhome.

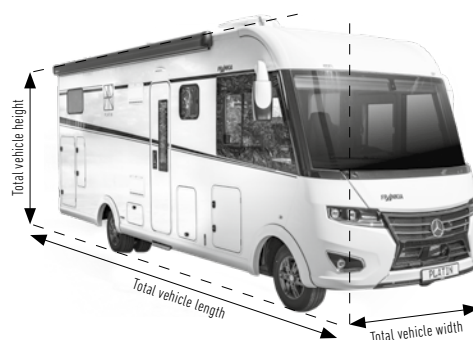
**Example (as above):**

Technically permissible maximum laden mass	<b>3,500 kg</b>
Mass in running order (+ 3 %)	<b>- 3,038.5 kg</b>
Mass of passengers	<b>- 225 kg</b> (3*75 kg)
Mass of optional packages/equipment	<b>- 65 kg</b>
Pay-mass	<b>= 171.5 kg</b>

To ensure that the occurrence of legally permissible production-related deviations in the mass in running order does not result in the configuration falling below the legally prescribed minimum pay-mass, we as the manufacturer have defined a maximum mass of optional equipment. In the calculation of this maximum mass of optional equipment, we have already taken into account empirical values for the production-related deviations in the mass in running order. The maximum mass of optional equipment can be found in the Technical Data. Also included in this value are the optional equipment features of country versions and special models that are not part of the standard equipment.

For the configuration of your motorhome, this means that you cannot continue or finalise the configuration if the maximum mass of optional equipment is exceeded. In this case, you have the option of deselecting optional equipment or belt seats or ordering the vehicle with an increase in the technically permissible maximum laden mass.

Although we as the manufacturer endeavour to minimise the occurrence of production-related deviations through the (technical) optimisation of our production, the weighing of your motorhome at the end of the line may exceptionally show that the vehicle does not comply with the minimum pay-mass, despite the limitation of the maximum mass of optional equipment. In such a case, we may not deliver your motorhome unless compliance with the minimum pay-mass is guaranteed by removing optional equipment or belt seats or by increasing the technically permissible maximum laden mass of the vehicle.



The **total vehicle length** corresponds to the measurement between the outermost point of the front spoiler and the outermost point of the rear panel (without trailer coupling).

The **total vehicle width** corresponds to the measurement between the outer sides of the exterior walls on both the driver and passenger side without outer mirrors and without an awning.

The **total vehicle height** is the measurement between the roadway and the highest point of the unladen vehicle (without antenna) and may vary with installations and superstructures (e.g. skylights, SAT or air conditioning systems).

The **bed measurements** specified are external measurements. The measurements of the mattresses supplied may differ.



A white motorhome is partially visible on the right side of the image, parked in a dense forest. The scene is filled with various types of trees, including deciduous trees with bright green leaves in the foreground and darker evergreens in the background. Sunlight filters through the canopy, creating a dappled light effect. The motorhome is a modern, boxy design with large windows and a dark roof.

**FOR EVERYONE  
WHO WANTS  
MODERN DESIGN  
WITH MAXIMUM  
SPACE – FROM 3.5 T\*!**



# MAKE YOUR WAY

The NEO shows you the "light" side of the Mercedes-Benz platform. It offers a unique combination of lightness, quality and space – with a total weight from 3.5 t\*. How, you ask? With revolutionary double floor technology. With use of high-quality, lightweight materials throughout. And, of course, with exceptional spaciousness and a fresh design. So very FRANKIA.

Only 3.5 t total weight\*

Notes on Technical Data .....	2-3
Travelling with the NEO .....	4-5
Mercedes-Benz expertise .....	6-7
Living .....	8-9
Kitchen .....	10-11
Sleeping .....	12-13
Spa-like bathroom .....	14-15
Storage space .....	16-17
NEO features at a glance .....	18-19
NEO BLACK LINE .....	20-21
Interior design options .....	22-23
Floor plans .....	24-25



\* Please refer to page 24 for important information regarding the Technical Data.



# LET THE STARS SPEAK

FRANKIA and Mercedes-Benz have written many success stories together. For over 50 years, we have been building exceptional motorhomes on a strong platform – and our goals for the future remain the same: To test the limits, always present ourselves in top form and give you the freedom to choose which FRANKIA best suits your needs. So for 2025, the (Mercedes) Star shines bright like never before.



From camper van to luxury liner: Yucon microliner, FRANKIA NEO on 3.5 t or the FRANKIA PLATIN luxury liner? It's your choice.









## DRIFT AWAY

Enjoy your holiday NEO-style: Put your feet up, take some time for yourself or simply do whatever you like. There's even more space to do all this in the new FRANKIA NEO with crosswise bed in the rear and extra-large seating area.









Achtung!  
Bei Benutzung der Fensterklappe  
das Verriegelungssymbol betätigen  
und das Fenster vollständig  
geschlossen halten. Sonst  
kann Regen eindringen.

# INDULGE

Fresh Norwegian salmon or sweet French crêpes ... you decide what you want on your plate. The intelligently designed NEO kitchen with extra-large refrigerator has plenty of space to cook your favourite dish and unwind.













## SIT BACK AND RELAX

The separate twin beds or the new crosswise bed in the rear are almost too nice for sleeping ... you could also just spend a relaxing day in bed listening to the sound of the waves and the birds singing.





## FRESHEN UP

Plenty of room, lots of space – and even more refreshing. Hard to believe? It's true! The FRANKIA NEO makes it possible thanks to intelligent multifunctional solutions and a clever layout concept in the NEO bathroom.





Simply push to open the vanity



Spa-like shower with extra-large tray



Toilet seat disappears under the vanity thanks to push-to-open/close design





## EXPERIENCE TRUE FREEDOM

Is it really possible to take all the things you need for a great trip along with you on the road? It is in the NEO. You've got plenty of storage space here for all your belongings. But that's not all: The FRANKIA Smart-Load system makes it especially easy for you to load and unload your gear.





## Simply clever: packing with the FRANKIA Smart-Load system (optional)

Completely redesigned vehicle rear

Large rear storage compartment with a height of 1.20 m

Extra-large one-part 1.50 x 1.15 m rear flap

Lowered rear section for easy loading

FRANKIA front load-through storage in the double floor – accessible from the interior and double floor (depending on floor plan)

Practical new folding solution: storage space in the seating group



Plenty of space in the FRANKIA double floor



Get to the things you need from the interior



Clever: wardrobe under the bed



# See for your- self!

## Highlights of the FRANKIA NEO

FRANKIA NEO knows the way: It's all about innovative lightweight design with a total weight\* of 3.5 or 4.5 t and an agile length of under 7 m. The Sprinter by Mercedes-Benz provides a great basis with powerful front wheel drive.



## Priority No. 1: setting new standards

Never rest, push the limits, create something new – this has always been the spirit that connects FRANKIA and Mercedes-Benz. Over 50 years ago, today and tomorrow.



## Get out there, no matter when

Perfect for winter travel: new ThermoProtect wall structure made of high-quality aluminium alloy, durable GFRP roof and heated double floor.



## Luckily you discovered the NEO formula

Exceptional spaciousness + lightness + class = NEO! It's that easy with 2 m of headroom throughout and a high-quality lightweight design according to FRANKIA standards.

\* Please refer to page 24 for important information regarding the Technical Data.





## It suits me

Now, in addition to the MT/MI 7 GDK with twin beds, the NEO is also available as an MT/MI 7 BD model – with crosswise bed in the rear and spacious seating area. Both are equipped with a large kitchen and 84 l refrigerator.



## Everything's so easy

Packing was never easier: innovative Smart-Load system by FRANKIA (optional) – with extra-large rear flap, lowered rear storage compartment and front load-through storage in the double floor.



## Everything's so practical

With Light Wing lighting (optional), multifunctional features in the bathroom, driver assistance systems such as Crosswind Assist and Keyless Start, self-retracting cable reel and much more.



## There's so much space

Full-length double floor with 20 to 40 cm height thanks to special AL-KO frame, large rear storage compartment with 1.20 m height, loads of storage space in the interior.









## GET READY TO BE EXCITED

... about bold vehicles full of character. Whether Low-Profile or A-Class, all FRANKIA NEO versions are now also available in the BLACK LINE edition – with a striking and contrast-rich exterior design, elegant leather/microfibre upholstery and a host of additional features already included.





## GET READY TO BE INSPIRED

Clothes make the person. NEO's no different: But its style is very flexible, with clear, modern interior design options that inspire you to add a personal touch and make the NEO your own according to your unique style.





NEO MILAN

## NEO VENICE

Wood



Visby/White

Upholstery



Grey dots

Upholstery



Brown

Floors



Anthracite

Cushions



Pink

Curtains



Venice

## NEO NAPLES

Wood



Visby/White

Upholstery



Brown

Upholstery



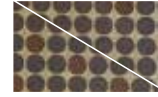
Dark Grey

Floors



Anthracite

Cushions



Dots

Curtains



Naples

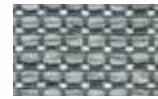
## NEO GRANITE

Wood



Manhattan/White

Upholstery



Grey

Upholstery



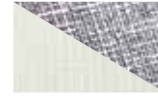
Taupe

Floors



Anthracite

Cushions



Beige/Grey

Curtains



Granite

## NEO BLACK LINE – MT 7

Wood



Visby/White

Upholstery



Leather

Upholstery



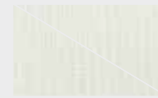
Microfibre

Floors



Anthracite

Cushions



Beige/Beige

Curtains



BLACK LINE



# TURN HEADS

Anyone can do the ordinary. The FRANKIA NEO has an extraordinary appearance: Its automotive-inspired dynamics and striking contours give it unique character. After all, turning heads is also part of the experience of driving the FRANKIA NEO.



## \* Important information regarding the Technical Data

### 1. Technically permissible maximum laden mass (kg)

The technically permissible maximum laden mass is the total mass specified by the manufacturer that the vehicle must not exceed when driving.

### 2. Mass in running order (kg)

The mass in running order indicates the unladen weight of the vehicle with standard equipment according to the manufacturer's specifications. It includes the mass of the body, the cab, the tyre repair kit and the tools, the fresh water tank filled to 100 % in driving mode (drive load according to the Technical Data), one aluminium gas cylinder filled to 100 % with a weight of 16 kg, the fuel tank filled to 90 % including fuel, the AdBlue-Tank filled to 100 % and the mass of the driver, which (regardless of the actual weight) is rated at 75 kg. This calculated value is subject to legally permissible production-related deviations of up to +/- 5 % (see addition in brackets), which may affect the pay-mass of your motorhome and therefore also the mass of the optional equipment. Please note that the specified value is the mass in running order of the basic version of the vehicle shown. Information on the mass in running order for the vehicle version of your motorhome can be found after delivery of the vehicle in section 13 of the Certificate of Conformity (CoC).

### 3. Standard belt seats

The mass of the passengers is based on of the number of belt seats specified by the manufacturer rated at 75 kg per belt. The mass of the driver, which has already been included in the mass in running order, must be deducted. For a vehicle with four belt seats, the mass of the passengers is 225 kg (3\*75 kg).

### 4. Maximum mass of optional equipment

The maximum mass of optional equipment is a value calculated by the manufacturer to limit the mass for optional equipment that can be ordered ex works. This is to ensure that the vehicle complies with the legally prescribed minimum pay-mass. If you exceed the maximum mass of optional equipment during configuration, you can only continue or finalise the configuration if you deselect optional equipment or belt seats or order the vehicle with an increase in the technically permissible maximum laden mass. You can find detailed information on the weight specifications on page 2.

### 5. Fresh water tank in driving mode (drive load)

Please note that the filling of the fresh water tank is considerably reduced when driving. If the pay-mass of your motorhome is sufficient, the filling of fresh water tank can be increased.



# TAKE YOUR TIME TO DECIDE

More room with the crosswise bed in the rear or more sleeping space in the extendable separate twin beds?  
Choose between two different FRANKIA NEO floor plans.

## NEO



MT 7 GDK

7.0 m 3.5 t/4.5 t\* 2/3\* 2/4\*



MI 7 GDK

7.0 m 3.5 t/4.5 t\* 2/4\* 2/4\*



MT 7 BD

6.8 m 3.5 t/4.5 t\* 2/3\* 2/4\*



MI 7 BD

6.8 m 3.5 t/4.5 t\* 2/4\* 2/4\*



Mercedes-Benz



Only 3.5 t total weight\*

### BLACK LINE

 Approx. length of motorhome	 Maximum permissible laden weight	 Sleeping berths	 Seats with seatbelts	Standard/optional
---	--	---	---	-------------------

\* Please refer to page 24 for important information regarding the Technical Data.



FRANKIA is a PILOTE Group company  
FRANKIA-GP GmbH  
Bernecker Straße 12 | 95509 Marktschorgast | Germany  
Phone: +49 (0)92 27 738-0 | Fax: +49 (0)92 27 738-49  
Email: [info@frankia.de](mailto:info@frankia.de)

Experience the world  
of FRANKIA online:

**[www.frankia.com](http://www.frankia.com)**



The illustrations in this brochure are examples. They may contain accessories and extras that are not included in standard equipment packages. The actual model versions may vary. Technical changes and errors excepted. Equipment designated as standard and/or optional may vary from country to country. The images may vary in colour for printing reasons. Printed in Germany. © Copyright 2024 by FRANKIA-GP GmbH